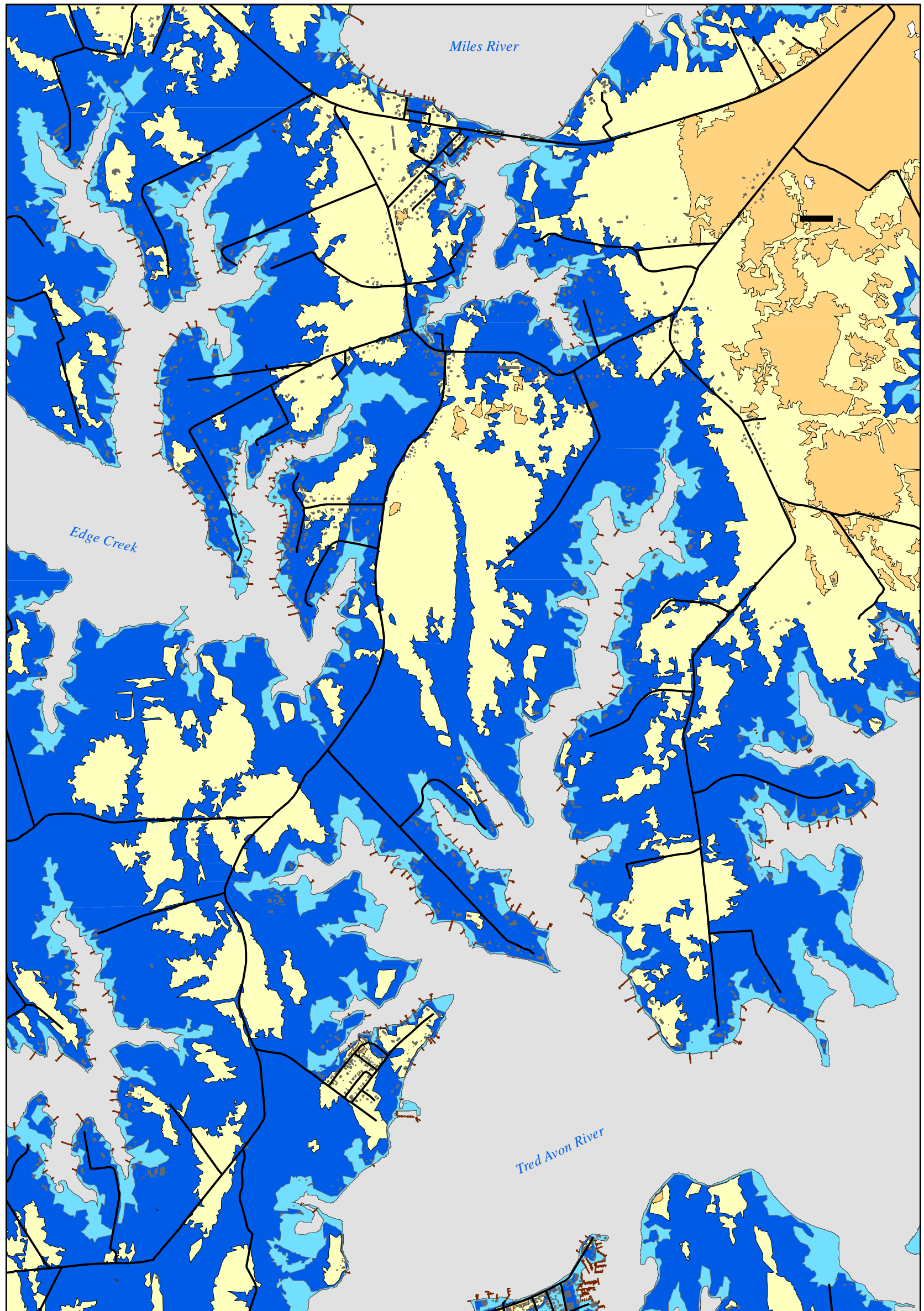


# NEWCOMB, ROYAL OAK, & BELLEVUE HURRICANE STORM SURGE MAP

Prepared by  
Talbot County  
Department of Public Works  
Geographic Information Systems  
May 25, 2006

Revised in March 2006 using new SLOSH model data from COE.



### Areas of Possible Flooding

- Category 1 Hurricane 06
- Category 2 Hurricane 06
- Category 3 Hurricane 06
- Category 4 Hurricane 06
- Water

### SLOSH MODEL SURGE VALUES (regional elevation)

Cat 1	5.1
Cat 2	8.3
Cat 3	10.9
Cat 4	13.4

This map was derived from data developed and produced by the Army Corps of Engineers, Philadelphia District. It is made available to Delmarva Peninsula state and local government emergency management and other interested agencies as a preview of inundation areas that will be used in hurricane evacuation traffic modeling. Areas of possible flooding are based on the overlay of maximum SLOSH Model storm surges on available ground elevation data.

This map has been developed as a planning tool for the Talbot County Emergency Management Agency.